

Parental Responsibilities to the Providers

A quality family Child Care is a partnership, requiring equally responsible parents and providers. Parents should:

- ♥ Adhere to the arrival and departure times agreed upon
- ♥ Promptly return medical and intake forms
- ♥ Bring items from home that the provider requests (change of clothes, diapers, etc.)
- ♥ Provide instructions for any concerns or problems
- ♥ Treat your child care provider as the professional she is
- ♥ Tell your provider you appreciate her
- ♥ Keep provider informed about changes in your child's routine
- ♥ Pay the provider promptly
- ♥ Keep a sick child at home

Red Flags

(after care has begun)

Be aware of signs which may indicate potential abuse, neglect, or lack of adequate supervision in a child care setting. Always report any suspected abuse to the Department of Human Services.

Changes in your child's behavior such as nightmares, withdrawal, unhappiness, or regressive immature behavior may be signs of normal childhood stress, or they may indicate more serious problems. Discuss any concerns with your provider.



Compliments of...

This brochure is provided by Adams County Association of Family Child Care (ACAFCC), which is an affiliate of the Colorado Association of Family Child Care (CAFCC). The ACAFCC works actively to better the quality of care available to children and their families, in addition to offering support services and professional growth opportunities for providers.

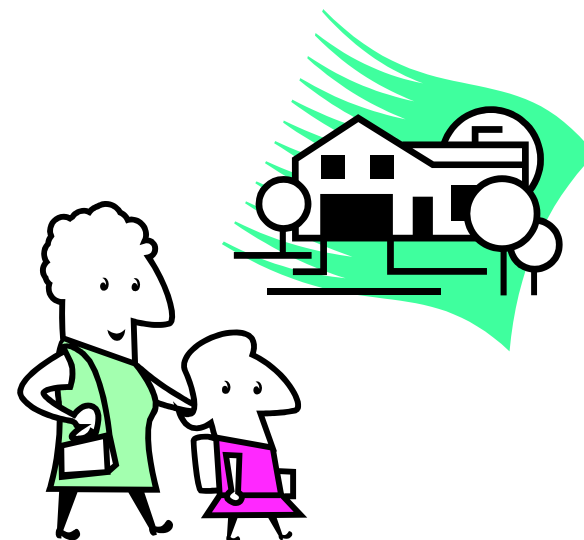
The telephone number for the FREE child care referral service offered by the Adams County Association of Family Child Care is 303.451.1061.

If you need child care outside of Adams County, check your local Yellow Pages under Child Care.

Although we cannot recommend any provider, we can verify that all the Child care Providers on our list are licensed.

CHOOSING LICENSED FAMILY CHILD CARE

*“A HOME AWAY
FROM HOME”*



FREE CHILD CARE REFERRAL

Adams County Association of Family
Child Care

303.451.1061

What is Family Child Care?

Family Child Care is an extension of your own home, where children are loved, taught responsibility, nurtured and disciplined in a positive manner. Children will have the opportunity to be part of a family while away from their own family. The children will grow together, play together and share together. Field trips, pre-school, and other extra learning experiences are offered in most child care homes. Some providers are Educare rated and/or credited.

Family Child Care also gives children an opportunity to experience new foods and share a meal in a family atmosphere.

Types of Child Care Homes:

- ~ Regular Family Child Care home
- ~ Infant/Toddler home
- ~ Large Family Child Care home
- ~ 24 hour care (nights & weekends)
- ~ Experienced Provider

**CHOOSE THE PROVIDER WITH WHOM YOU
FEEL THE MOST COMFORTABLE— YOUR
INSTINCTS ARE AN IMPORTANT GUIDE!!**

Things to think about when choosing a Child Care Home

Be sure to ask any and all questions on the phone that would determine whether or not you would choose this provider. For example:

- ♥ Do they smoke?
- ♥ Do they have pets and where are they kept?
- ♥ Transportation of the children
- ♥ What is their location
- ♥ What are their hours
- ♥ Pick-up and delivery to school, social events, etc.
- ♥ Fees for child care

Visiting the Child Care Home

The purpose of an open-ended interview is to pose questions that do not necessarily have right or wrong answers, but provide information about a person's values and services.

Here are some things to consider:

- ♥ Have your child(ren) present at the interview
- ♥ Ask for a tour of the home and outside
- ♥ Survey the play areas, toys and activities offered
- ♥ Ask about naps and the napping area
- ♥ Tour the eating area and ask about types of food offered
- ♥ Ask about special equipment needs such as playpens, car seats, etc
- ♥ Check for safety features

Quality Check List

Questions parents might ask a potential Child Care Provider can include:

- ♥ Why do you do child care?
- ♥ How long have you been doing child care?
- ♥ May I see your license? (check capacity)
- ♥ What is your program philosophy?
- ♥ What are your professional affiliations?
- ♥ What child care training and education do you have?
- ♥ May I visit your home while you are caring for children?
- ♥ May I bring my child so that we may see his/her reaction to your child care setting?
- ♥ May I have references from former as well as current clients?
- ♥ Do you smoke?
- ♥ Do you have pets and where are they kept?
- ♥ Do you work late hours on occasion?

You may verify that there are no substantiated complaints in a provider's file by contacting the Division of Child Care at 303.866.5958.

Child Care Providers Policies

- ♥ Back up care
- ♥ Sick care (child as well as the provider)
- ♥ Emergency procedures